



## Murals of Christian Hosoi

Oil and Spray Can on Plaster

3 murals, 7.5' x 3.4' each

Saiz was recently accepted as an artist for the Starbucks Artist Projects for interior Murals in Starbucks Coffee cafés. These Murals, on the boardwalk in Venice Beach, CA, are a tribute to the rich skateboarding history of Venice and honor one of the true legends of the sport Christian Hosoi.

• **SOLD**







## Pink / Tina Marjorino

Oil and Spray Can on Canvas

2 pieces, 36" x 36"

These two paintings were commissioned by pop artist Pink and director Dave Myers to be the focal point of a Pink music video featuring the actress Tina Margorino, best known for her role in the film *Napoleon Dynamite*. The first Piece was the main hero gallery shot, and the second piece was a halfway-completed piece for Marjorino to paint on during filming.

• **SOLD**



## Featherboards

Unique Carved Skateboards

10" x 35"

These Featherboards are a new series of a camo and natural board colorways. Each board is uniquely carved and is one of a kind.





## Featherboards

Unique Carved Skateboards

10" x 35"

These Featherboards are a new series of brigher colorway and gold. Each board is uniquely carved and is one of a kind.

**Price: Set of 5 \$2200**

**Each board \$450**

**Unique Featherboards can be  
made to order.**



## 'Smokes'

Oil and Spray Can on Canvas with 2" frame.

Size; 24" x 30"

This painting 'Smokes' dwains the walls of  
LookMister Agency of San Diego.

• **SOLD**





### ***'Bukowski'***

Oil and Spray Can on Canvas with 2" frame.

Size; 18" x 24"

Currently showing at the Social List, Port Long Beach & Artistic Edges Gallery.



## ***'Lunch Break'***

Oil and Spray Can on Canvas with 2" frame.

Size; 24" x 36"

Currently showing at the Social List, Port Long Beach & Artistic Edges Gallery.

Prints

Size; 12"x 16"

**Price: \$40**





### ***‘Traintrack Kids’***

Oil and Spray Can on Canvas with 2" frame.

Size; 24" x 36"

Currently showing at the Social List, Port Long Beach & Artistic Edges Gallery.



## ***'Legs'***

Oil and Spray Can on Canvas with 2" frame.

Size; 24" x 36"

Currently showing at the Social List, Port Long  
Beach & Artistic Edges Gallery.





### ***'Hallways'***

Oil and Spray Can on Canvas with 2" frame.

Size; 24" x 36"

Currently showing at the Social List, Port Long  
Beach & Artistic Edges Gallery.



### **'Kids Boxing'**

Oil and Spray Can on Canvas  
with 2" frame.

Size; 48" x 30"

**SOLD**





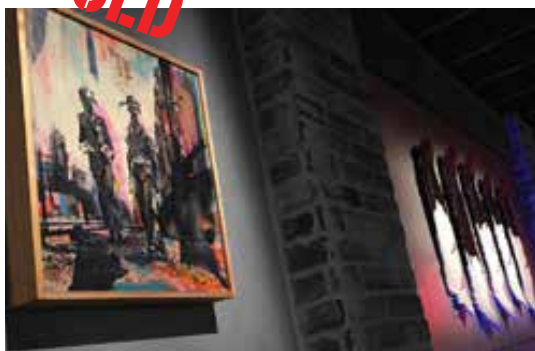
### ***‘Traintrack Kids’***

Oil and Spray Can on Canvas with 2" frame.

Size; 17" x 14"

This piece is part of actor, photographer and professional skateboard Jason Lee's collection.

**• SOLD**



### ***‘Tony Hawk Invert’***

Oil and Spray Can on Canvas with 2" frame.

Size; 26" x 40"

Tony Hawk selected this painting that will appear in the upcoming Tony Hawk Foundation Auction. Proceeds benefit the development of new public skateparks.

**•AUCTION**





### ***‘Lance, Cab, Billy, Micky, Tony at Contest’***

Oil and Spray Can on Canvas with 2” frame.

Size; 36” x 36”

This was is a painting of an image of some of the greatest legends of early skateboarding; Lance Mountain, Steve Caballero, Billy Ruff, Micky Alba and Tony Hawk.



***‘Albert Camus’***

Oil and Spray Can on Canvas with 2” frame.

Size; 18” x 24”

Commissioned painting of author Albert Camus.

• **SOLD**





### *'Sunday'*

Oil and Spray Can on C anvas with 2" frame.

Size; 26" x 40"

James Dean & Elizabeth Taylor During the filming  
of Giant.

• **SOLD**



### ***‘Walking the Tracks’***

Oil and Spray Can on C anvas with 2” frame.

Size; 32” x 48”

Currently showing at the Social List, Port Long  
Beach & Artistic Edges Gallery.





### ***'Hobo Crowd'***

Oil and Spray Can on C anvas with 2" frame.

Size; 32" x 48"

Currently showing at the Social List, Port Long Beach & Artistic Edges Gallery.



### ***'Kids on Car'***

Oil and Spray Can on C anvas with 2" frame.

Size; 32" x 48"

Currently showing at the Social List, Port Long Beach & Artistic Edges Gallery.





## Ray Barbee 'No-Comply

Oil and Spray Can on Canvas w/ Wood Frame

42" x 30" • **SOLD**

This painting features skateboarding legend Ray Barbee landing his signature trick, a No-Comply. The painting is based on a frame from Powell Peralta's video *Public Domain*. The piece was completed for an art show also featuring Barbee's work at Fall Brewery in San Diego, CA, and includes bottom-left signature of Barbee.

Signed prints available.

Prints  
Size; 12"x 16"  
Price: \$40



## ***‘Cab and Lance’***

Oil and Spray Can on Wood

20" x 32" • **SOLD**

This painting, based on a photo by Mofo, features skateboarding legends Steve Caballero and Lance Mountain.

Prints

Size; 12"x 16"

**Price: \$40**





### *'City of Fire'*

Oil and Spray Can on C anvas with 2" frame.

Size; 41.5" x 31.5"

Currently showing at the Social List, Port Long Beach & Artistic Edges Gallery.

• **SOLD**



### ***'Hobo Face'***

Oil and Spray Can on C anvas with 2" frame.

Size; 41.5" x 31.5"

Currently showing at the Social List, Port Long Beach & Artistic Edges Gallery.





### ***'City of Kittens'***

Oil and Spray Can on C anvas with 2" frame.

Size; 41.5" x 31.5"

Currently showing at the Social List, Port Long Beach & Artistic Edges Gallery.



### ***'Huddled Mass'***

Oil and Spray Can on C anvas with 2" frame.

Size; 40" x 40"

Currently showing at the Social List, Port Long Beach & Artistic Edges Gallery.



***'It's Gettin Late Kate'***

Acrylic and Pencil on Wood w/ Wood Frame.

Size; 16" x 20"





### ***'Bad Brains'***

Oil and Spray Can on Canvas.

Size; 24" x 30"

**• SOLD**



## 'Gonz'

Oil and Spray Can on C anvas with 2" frame.

Size; 18" x 24"

**SOLD**

Painting features skateboarding legend Mark Gonzales. Photo shot by J. Grant Brittain.

Prints

Size; 16"x 20"

Price: \$50



### ***‘Neil at Sadlands’***

Oil and Spray Can on C anvas with 2” frame.

Size; 18” x 24”

Painting features skateboarding legend Mark Gonzales. Photo shot by J. Grant Brittain.





### *'40s Boxing Ring'*

Oil and Spray Can on C anvas with 2" frame.

Size; 30" x 48"

**• SOLD**



### **‘Photographer’**

Oil and Spray Can on C anvas with 2” frame.

Size; 10” x 12”

**• SOLD**



### ***'Boxing Helmet'***

Oil and Spray Can on C anvas with 2" frame.

Size; 10" x 12"





***‘Hobo Neighborhood’***

Oil and Spray Can on C anvas with 2” frame.

Size; 14” x 17”

• **SOLD**



### ***‘LA Riot Nights’***

Oil and Spray Can on C anvas with 2” frame.

Size; 40” x 30”

• **SOLD**



### ***‘Rolling Stones’***

Oil and Spray Can on C anvas with 2” frame.

Size; 41.5” x 31.5”.

• **SOLD**





## ***‘Barflys’***

Pen on paper with frame.

Size; 4" x 6" Framed 12"x 14"

Barfly One line drawings



## Featherboards

Unique Carved Skateboards

10" x 35"

These skateboards, cut-out and carved into feathers, are painted in the traditional style of the Comanche Tribe of North America. Each board is uniquely carved and is one of a kind. A series of these boards hangs in the Skate Museum of Berlin, Germany and shown at museum group show in China, also featured in a LA show at Shepard Fairey's gallery Subliminal Projects. These Featherboards also dawn the collections of actor/pro skateboarder Jason Lee, artist/pro skateboarder Chris 'Dune' Pastras and global contemporary artist Shepard Fairey.

Unique Featherboards can be made to order.



